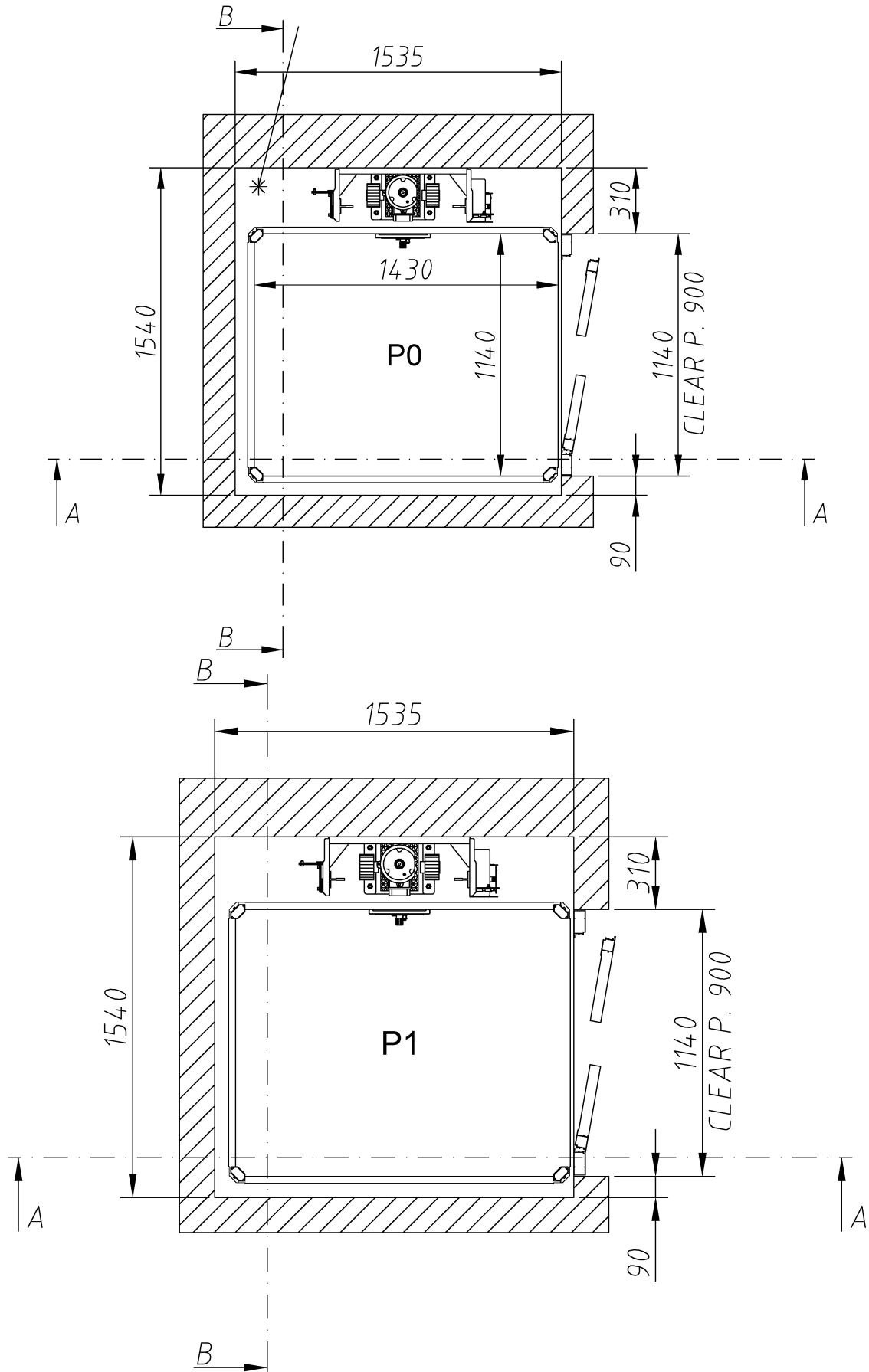


<szyb murowany, drzwi wychylne otwierane ręcznie>

CONNECTION POINTS FOR EL.
CABLES COMING FROM THE MAIN SWITCH



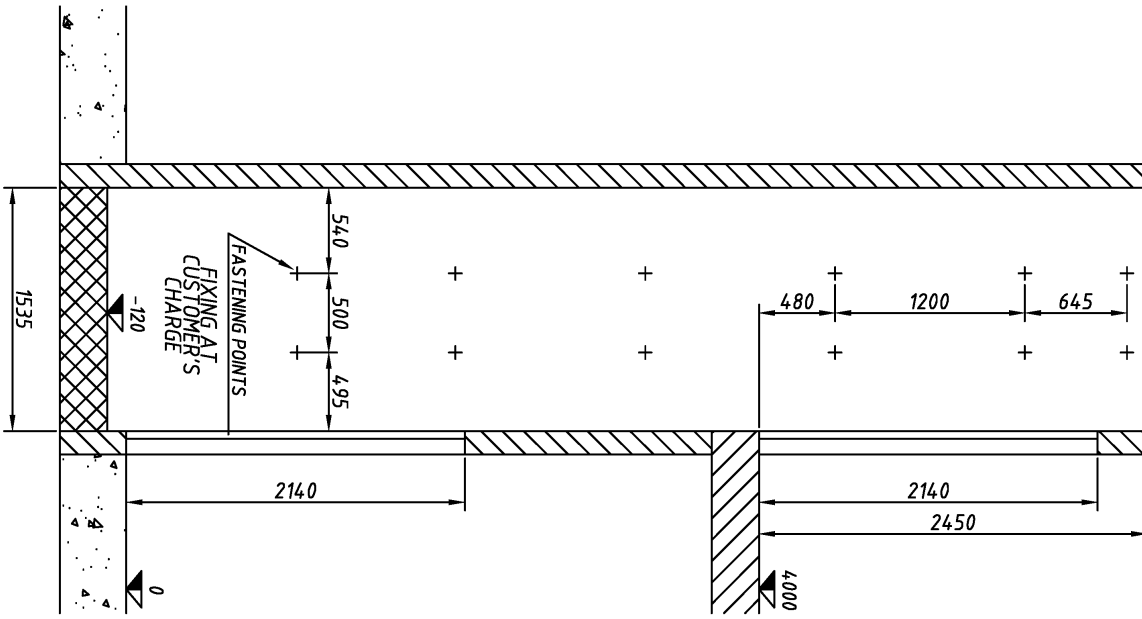
Data _____

Firma _____

WINDPOLDZWIG SP. Z.O.O.

vimec

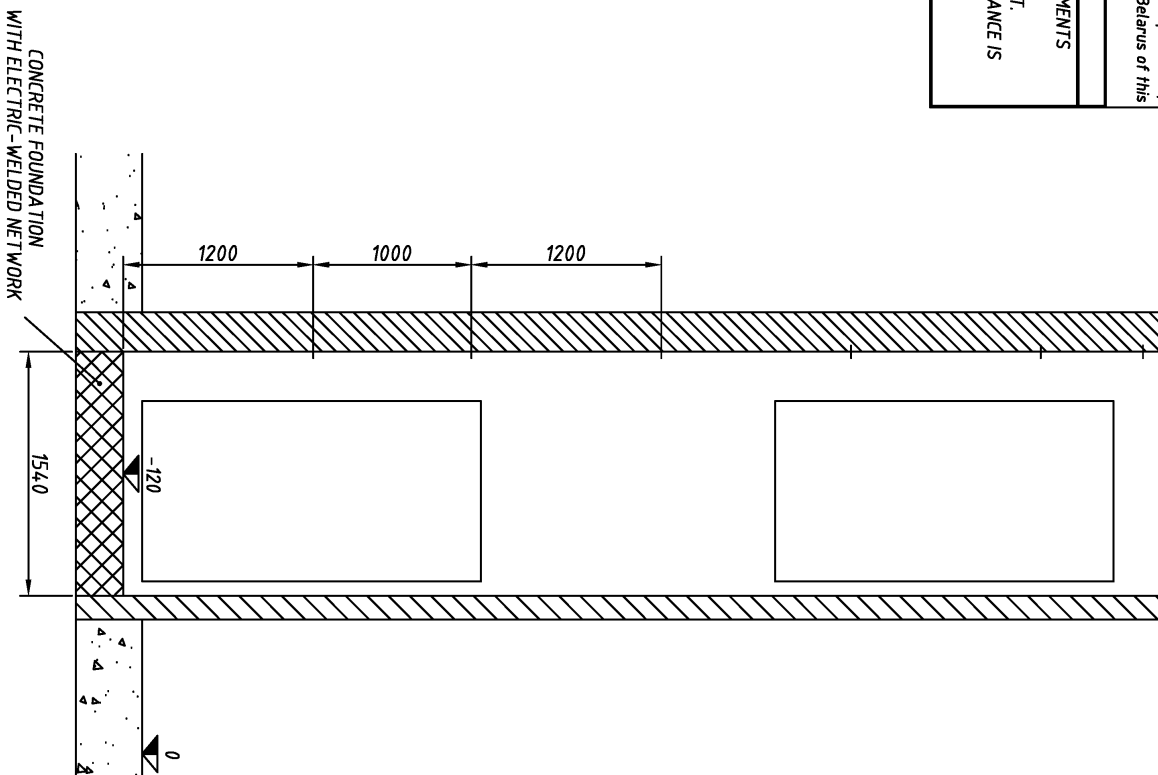
SEZ. A-A



In respect of the Annex XXIII of the Regulations (UE) 833/2014, concerning restrictive measures in consideration of Russia's actions that destabilize the situation in Ukraine and subsequent amendments, which lists the products for which export to Russia is prohibited, the export to Russia and Belarus of this model is forbidden

WARNING
 THE SHAFT MEASUREMENTS
 AND DOORS POSITION
 ARE VERY IMPORTANT.
 THE ADMITTED TOLERANCE IS
 15 mm ONLY.

SEZ. B-B

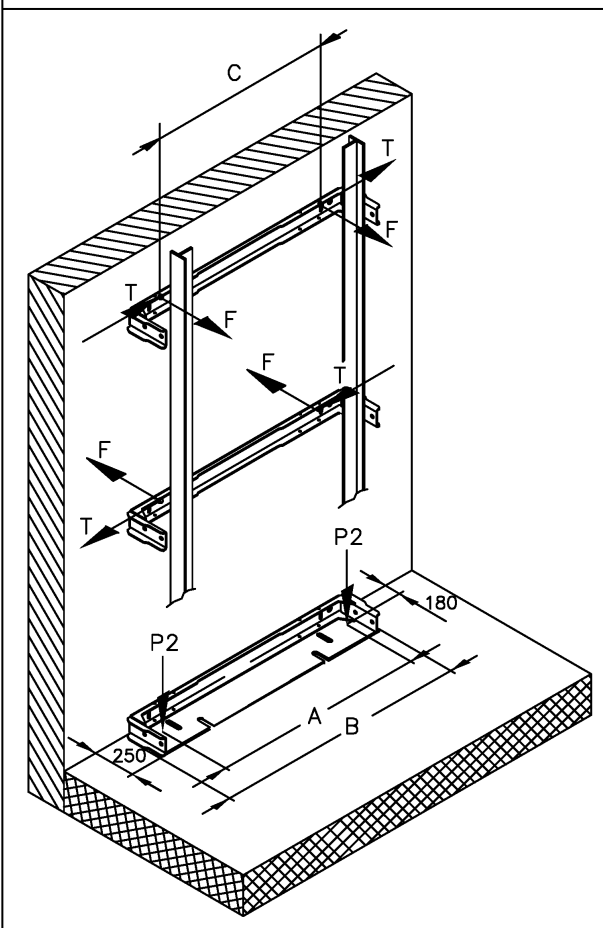


PLATFORM LIFT – E10

CLIENT: WINDPOLDZWIG SP. Z.O.O.

ORDER: AAC228

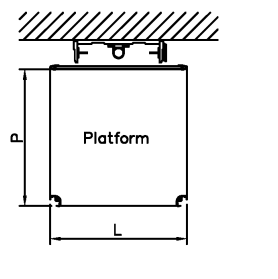
LOAD ON THE BASEMENT & ON THE RAIL SUPPORT



PROJECT DATA

Q =	400	kg
L =	1460	mm
P =	1170	mm
A =	550	mm
B =	640	mm
C =	500	mm
D =	4000	mm

- Q = Load
- L = Platform width
- P = Platform depth
- A = Distance between "P2" load
- B = Base plate width
- C = Distance between connection
- D = Travel



VERTICAL LOAD OF THE EQUIPMENT ON THE BASEMENT PLATE

Consider the maximum loads and Not the sum of the loads	P1 (kg)	P2 (kg)
WORKING POSITION	0	449
WITH SAFETY GEAR IN ACTION	0	1620

HORIZONTAL LOAD OF THE EQUIPMENT ON THE RAIL FIXING

Centred Loaded	Maximum load decentralized on the platform	
	F(kg)	T(kg)

WORKING POSITION	209	191	45
WITH SAFETY GEAR IN ACTION	383	350	83

Norm: SR – Fuhrunsschiene

DATE 01/11/2024